



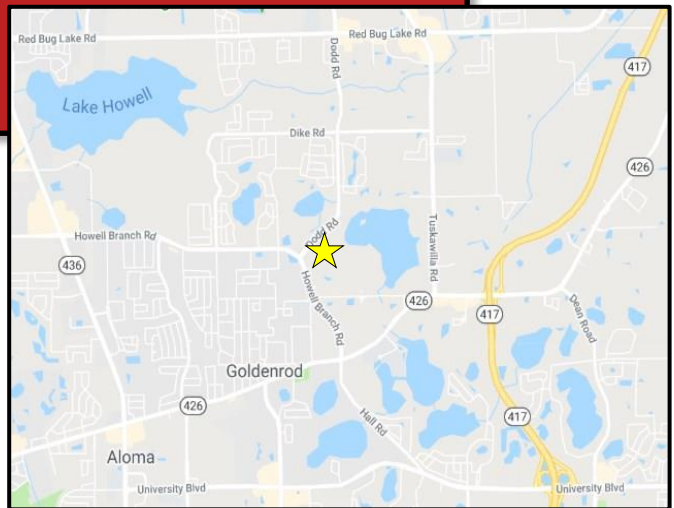
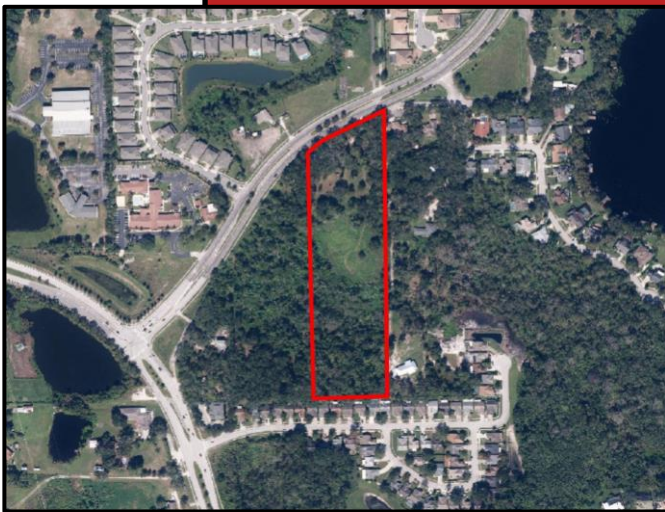
C. BRENNER, INC.

COMMERCIAL REAL ESTATE

8.8 Acres Residential Land Winter Park

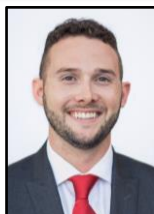
\$1,300,000

**1561 Dodd Rd,
Winter Park, FL 32792**



- Park-like infill site in east Winter Park
- Future land use is Low Density Residential (4 units/acre)
- 7+/- acres high and dry, 1.8+/- acres wetland
- +/- 365' frontage on Dodd Rd
- Established residential market with strong demographics
- Utilities available on Dodd and Howell Branch Rd
- Current A-1 zoning will allow agricultural uses such as nurseries and livestock
- Ideal site for Church or school
- Property is occupied, please call broker before touring!

Ben Brenner
Lic. RE Broker
C. Brenner, Inc.



Cell: 407-970-6447
Office: 407-677-1700

Email: bbrenner@cbrenner.com
Website: cbrenner.com

3586 Aloma Ave, Suite 5, Winter Park, FL 32792